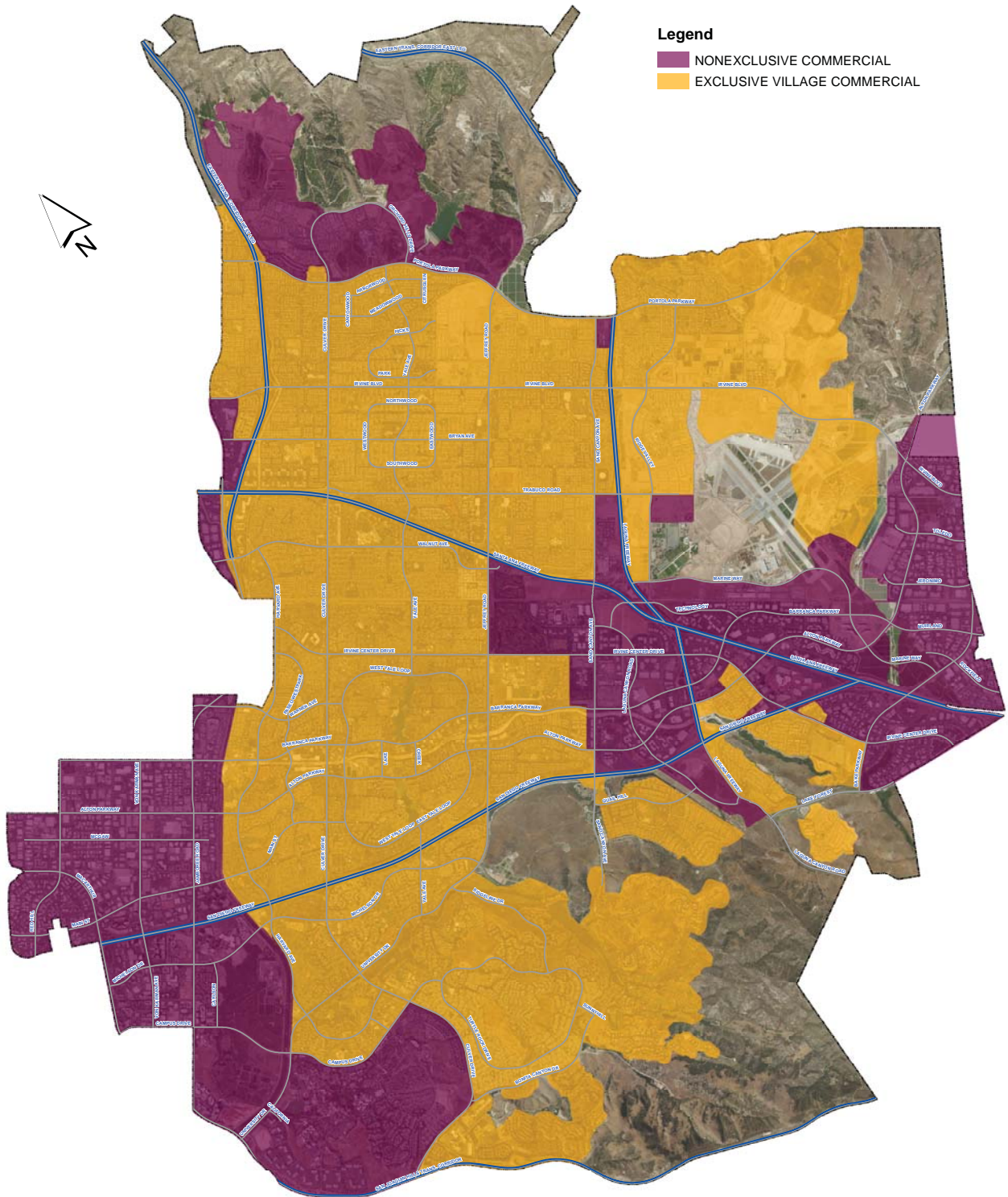


EXHIBIT A

CITY OF IRVINE

COMMERCIAL SOLID WASTE COLLECTION SERVICE AREAS



NOTE: Pursuant to California Public Resources Code Section 49520, et seq., some solid waste haulers may have legal rights to provide waste services to certain areas in the City regardless of the area designations on this map. All franchised haulers are eligible to provide collection of Construction and Demolition Debris and Temporary Bin Service, as defined in the Nonexclusive Franchise Agreement, to any premises within the City on an as needed and temporary basis. The terms and limitations of this agreement shall not apply to waste services provided at the facilities or properties of public agencies within the City limits that are not subject to the legal jurisdiction of the City of Irvine, including but not limited to public schools and colleges, and services to State, County and other governmental agencies.